

STAINLESS STEEL

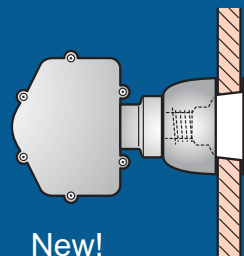
# FLUSH FUEL TANK VENTS



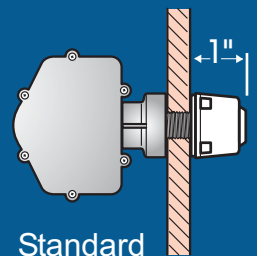
## NEW THREADED FLUSH FUEL VENT

COMPATIBLE WITH ATTWOOD P-TRAP  
AND INTEGRATED SURGE/P-TRAP  
ALLOWING FOR THE FIRST TIME,  
A FLUSH FIT OUTSIDE THE HULL

ATTWOOD 316 STAINLESS - PROVEN  
CORROSION RESISTANCE



New!  
Flush Vent



Standard  
Vent

## STAINLESS STEEL

# FLUSH FUEL TANK VENTS



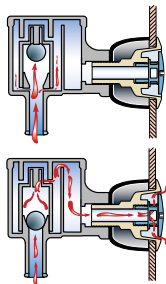
Attwood is proud to introduce a new addition to our line of Stainless Steel Flush Fuel Tank Vents. This new version can be threaded into our P-Traps and Surge Protectors allowing for the first time a flush fit on the outside of the hull.

### FEATURES AND SPECIFICATIONS

- Integral Allen socket to facilitate installation
- Meets ABYC minimum venting area requirements
- Torturous path design to minimize water ingestion
- Serviceable debris screen
- 1/16" - 1/4" hull thickness range with included washer.
- Spacers available for hull thicknesses up to 3/4"
- Includes silicon seals

### P-TRAP FUEL SURGE PROTECTOR

Eliminates the need to install a fuel line vent and a surge protector — now, one product helps avoid spills, provides fuel tank venting, and resists water intrusion into the fuel system.

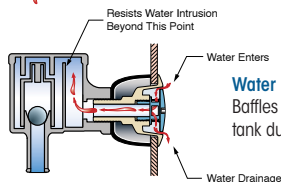


#### Surge Protection

Inertia of surging fuel drives the surge ball up against the upper seat, closing the large vent opening. Passage is limited to the smaller openings, which reduces fuel flow and minimizes spillage. When the vent line becomes full it helps the automatic fuel nozzle to shut off.

#### Venting

Without fuel inertia, the surge ball remains at rest, allowing unrestricted venting through all openings.



#### Water Intrusion Protection

Baffles resist water from entering vent line and fuel tank during normal sea conditions and washdowns.



1684  
Flush Mount



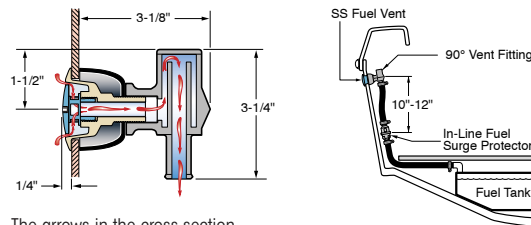
1680  
Standard Mount

Description	Vent Head	Max Hull Thickness	Bulk Packaging	Aftermarket Packaging	
<b>Flush Mount — 5/8" I.D. Hose</b>					
Flush Vent	Stainless Steel	1/4"	1684-1	1684-6	
Spacer		For 1674/1684	1/4" - 1/2"	911507	—
		For 1674/1684	1/2" - 3/4"	911508	—
<b>Standard Mount — 5/8" I.D. Hose</b>					
Standard Vent	Black Plastic	9/16"	1680-1	—	
	White Plastic	9/16"	1682-1	—	

\* Blister Card

### 90° P-TRAP FUEL TANK VENTS

These vents help prevent water from entering the fuel tank, yet allow air to vent freely, during normal sea conditions and washdowns. This eliminates the need for an anti-siphon loop in the vent hose.



The arrows in the cross section show the baffled route that water would have to travel in order to reach the fuel vent hose.



1674  
Flush Mount

1670  
Standard  
Mount

1675  
Surge Protector

Description	Vent Head	Max Hull Thickness	Bulk Packaging	Aftermarket Packaging	
<b>Flush Mount — 5/8" I.D. Hose</b>					
Flush Vent	Stainless Steel	9/16"	1674-1	1674-6	
Spacer		For 1674/1684	1/4" - 1/2"	911507	—
		For 1674/1684	1/2" - 3/4"	911508	—
<b>Standard Mount — 5/8" I.D. Hose</b>					
Standard Vent	Black Plastic	9/16"	1670-1	1670-3	
	White Plastic	9/16"	1671-1	—	
	SS Trim Cover	9/16"	66419-1	—	
Gasket			911347	—	
<b>Surge Protector — 5/8" I.D. Hose</b>					
Surge Protector, Black Plastic			1675-1	—	

\* -3 = Skin Pack, -6 = Blister Card